

Oshwal Talk

Creative Entrepreneurship

Nikhil Shah, August 2021

Standing on the shoulders of giants

Sir Isaac Newton



Family Story





HARROW & WEALDSTONE



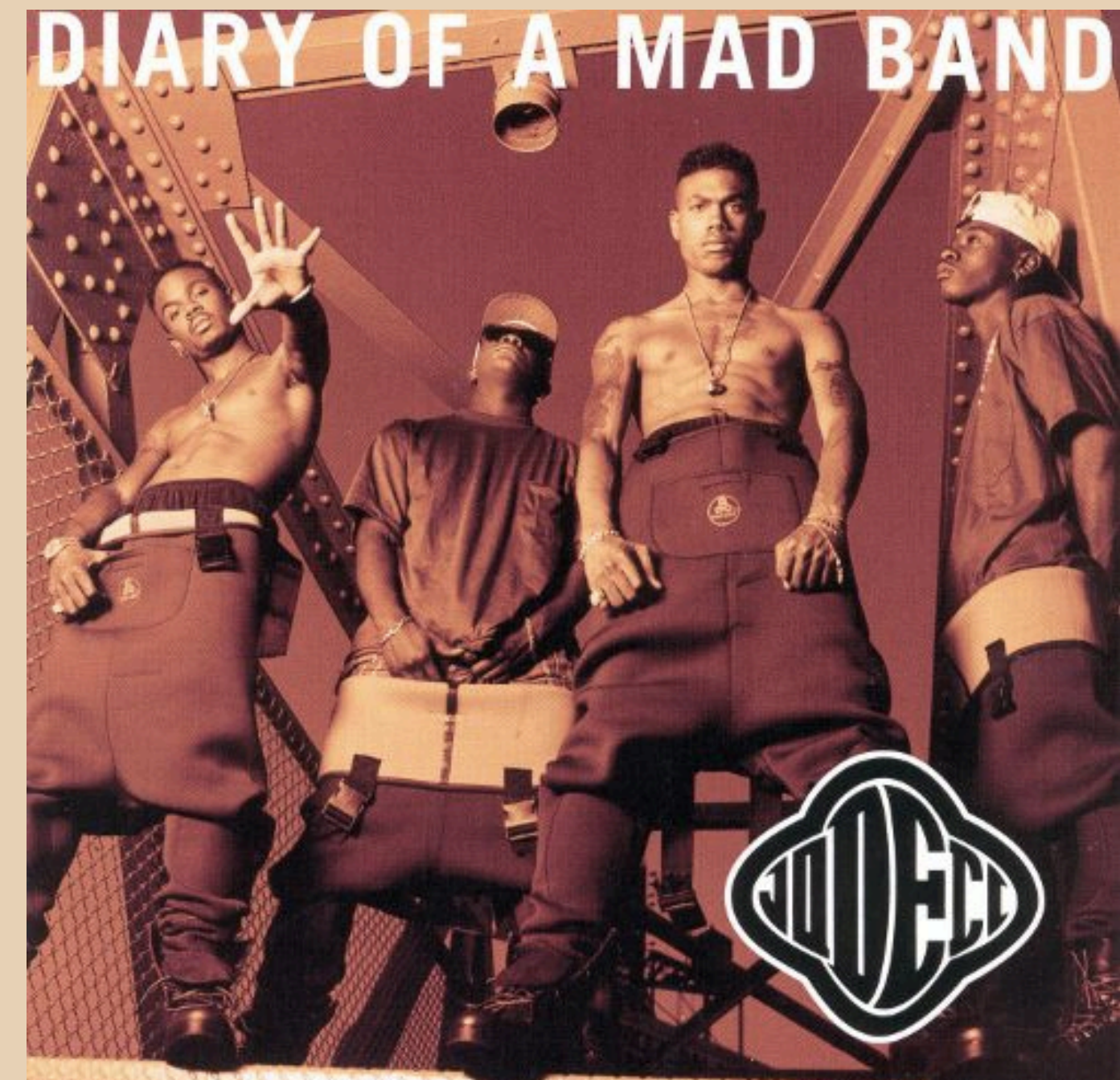
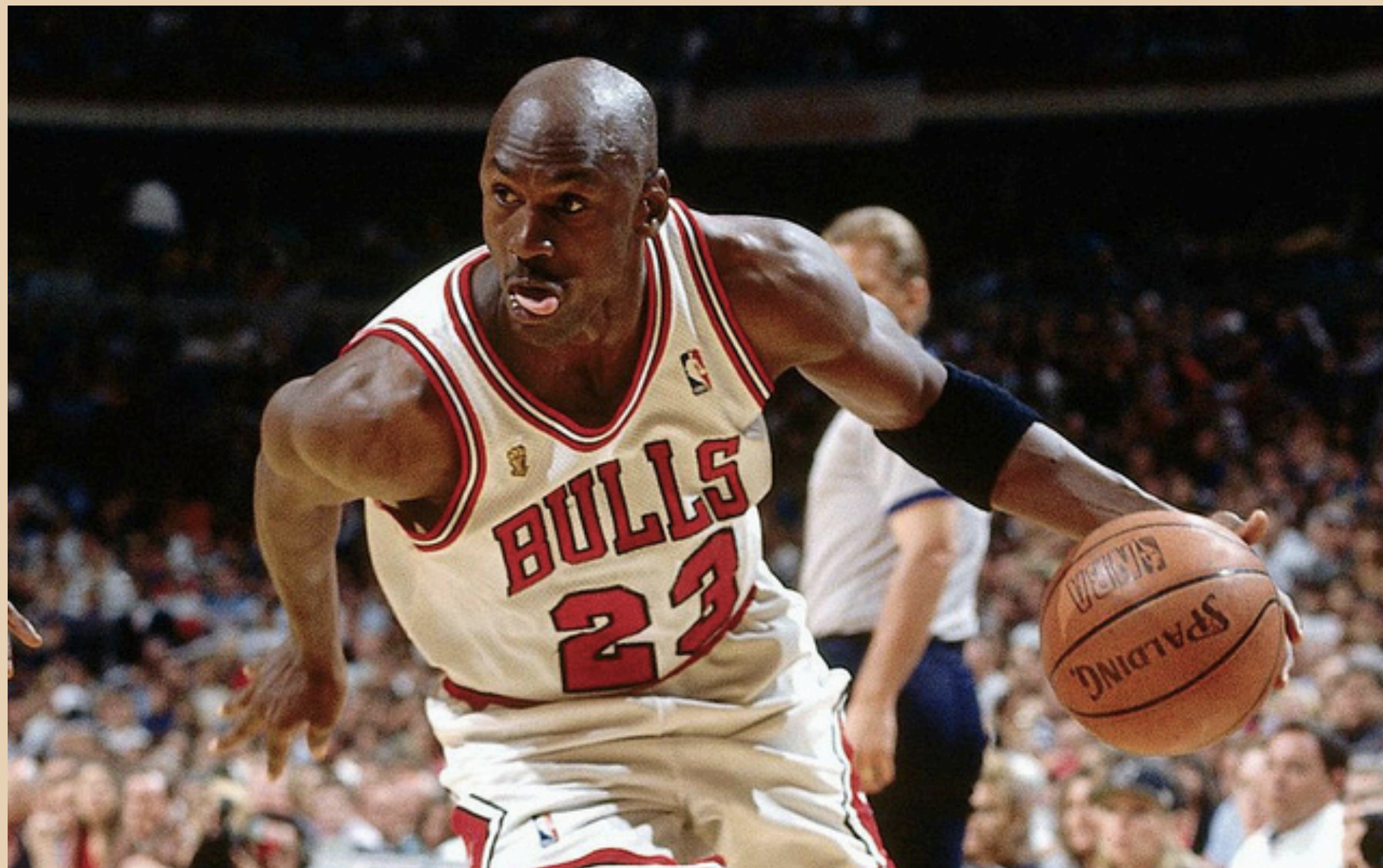




Early influences

(Including Oshwal!)

YOSHWAL
Youth



$$f(x) = \lim_{h \rightarrow 0} \frac{(x+h)^2 - x^2}{h}$$

$$= \lim_{h \rightarrow 0} \frac{x^2 + 2xh + h^2 - x^2}{h}$$

MATHS



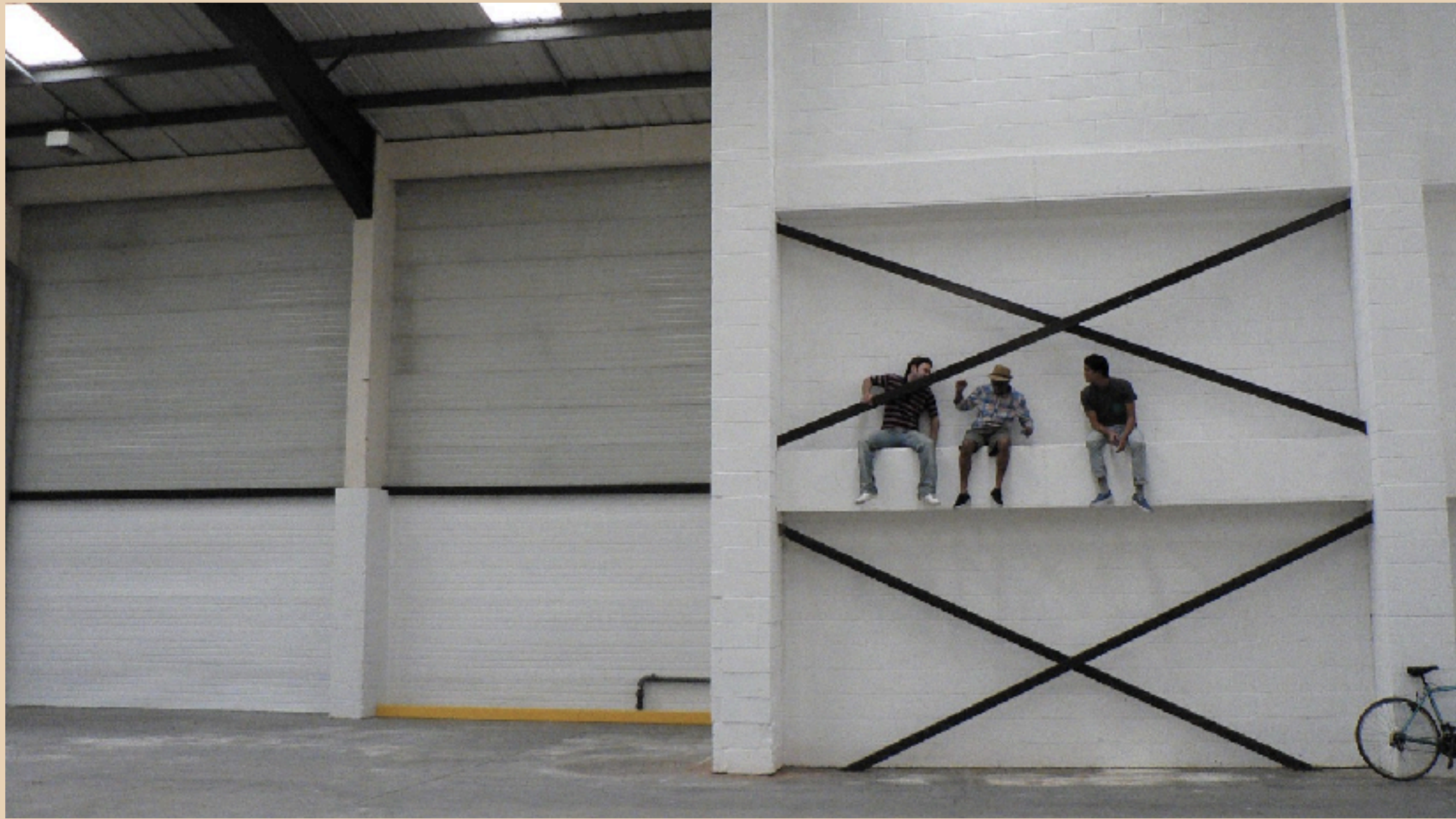
MUSIC



MARKETING



My Entrepreneur Journey

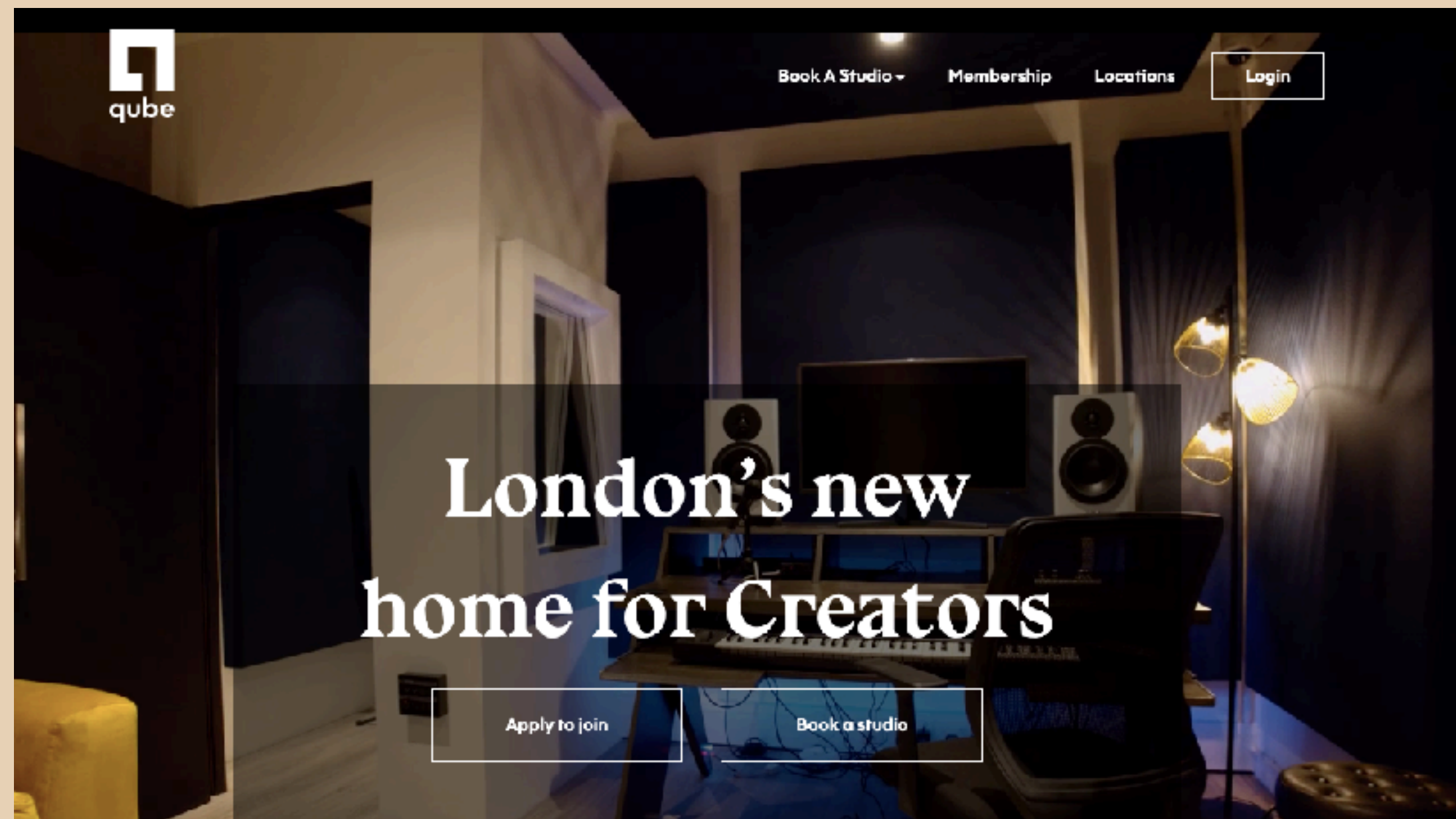


END OF AN ERA: STEPPING BACK FROM MIXCLOUD



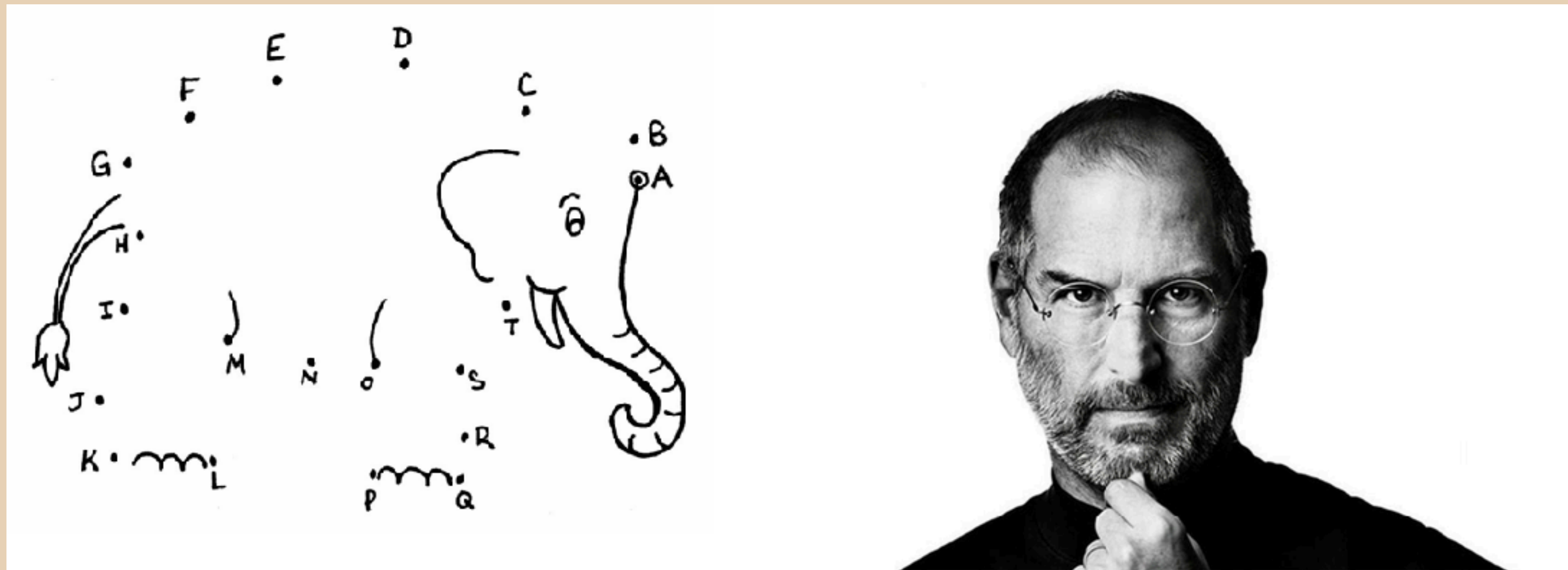
Nikhil Shah Jun 18, 2020 · 10 min read





Some Lessons Learned

“You can't connect the dots looking forward; you can only connect them looking backwards...”



Steve Jobs, 2005



Start With Why

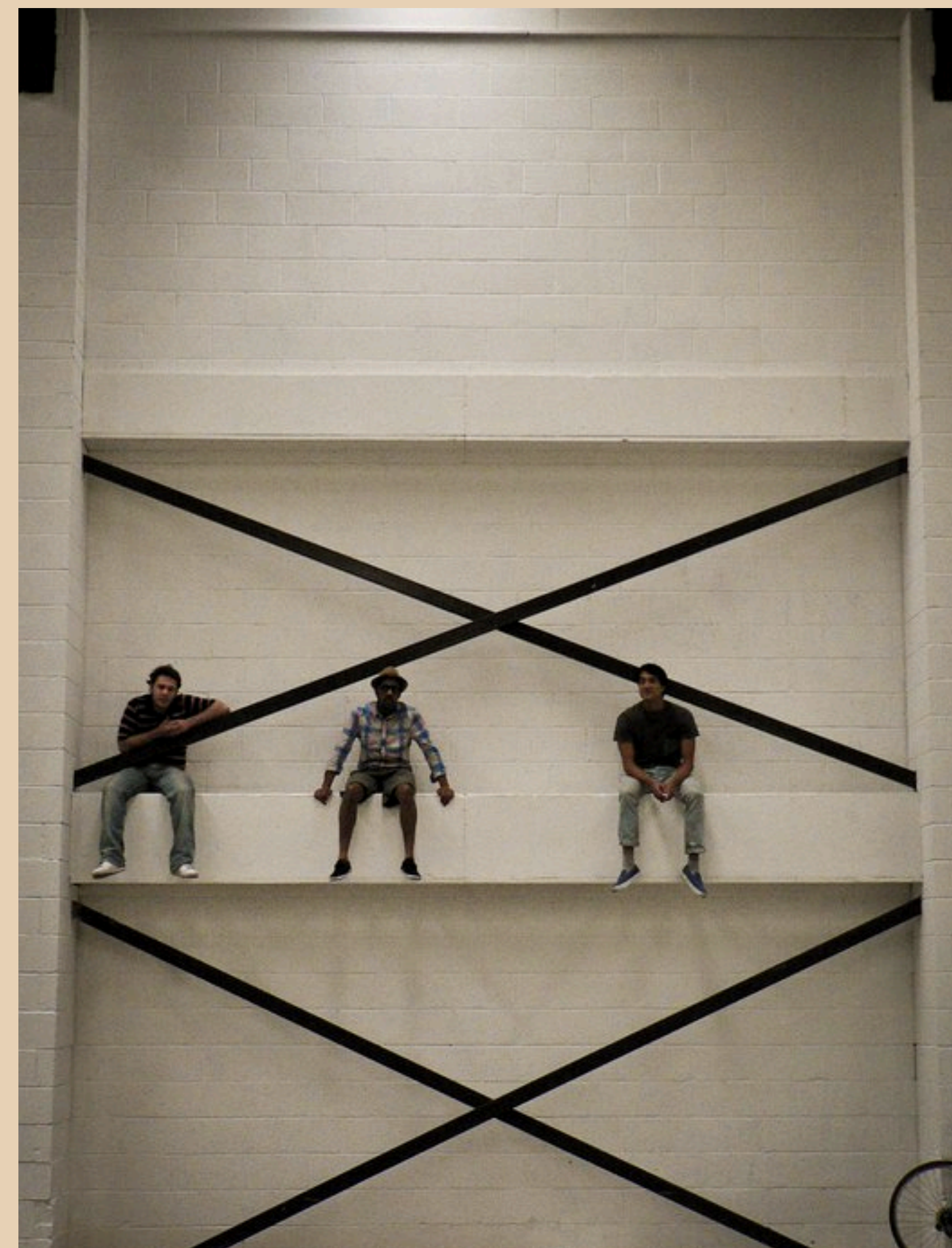
Simon Sinek



**Co
founders:**

**(date before
you marry!)**





Be Resourceful!



RE-THINKING REJECTION*

***ESPECIALLY FOR THE ARTISTS!**

Launch Early!

**“if you’re not embarrassed when you ship your first version you waited too long”
- Mat Mullenweg, founder of Wordpress**

***AGAIN, ESPECIALLY FOR THE ARTISTS!**

A person's face is partially visible behind a complex structure made of sticks and marshmallows, which is a common challenge in design thinking exercises. The person is looking intently at the structure. The background is a warm, golden-brown color.

iterate, iterate, iterate...
and then iterate again

learn quickly
make cheap mistakes



focus, focus, focus

A top-down view of a group of people's hands and forearms stacked in a circle. The hands are of various skin tones, including light, medium, and dark. Some people are wearing light blue athletic shorts and white shirts, while others are in casual clothing like a grey sweater. The background is dark, making the hands and the white text stand out.

**BUILD
YOUR
SUPPORT
COMMUNITY**